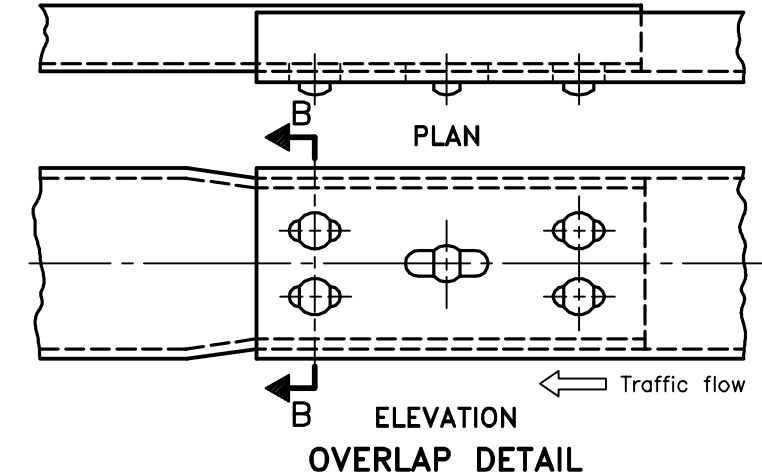


SPLICE BOLT AND NUT

SPLICE BOLT LENGTH	
LOCATION	LENGTH
At posts	32
At structures	64



OVERLAP DETAIL

NOTES:
 1 Base metal thickness of channel shall be 4.0mm nominal and 3.8mm minimum.
 A All dimensions are in millimetres unless otherwise shown.

ONTARIO PROVINCIAL STANDARD DRAWING
GUIDE RAIL SYSTEM, STEEL BEAM
CHANNEL
COMPONENT

Nov 2016 Rev 2

OPSD 912.102

