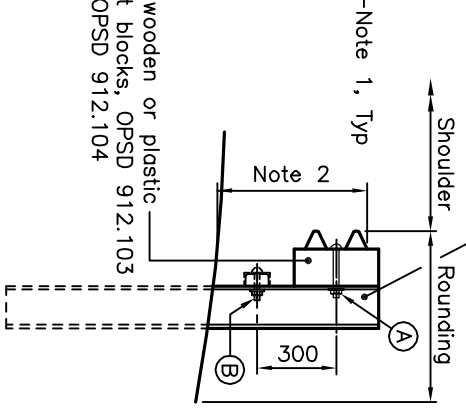
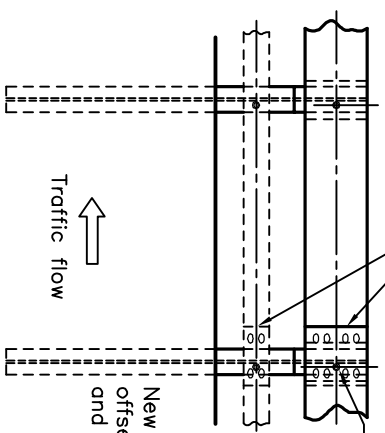
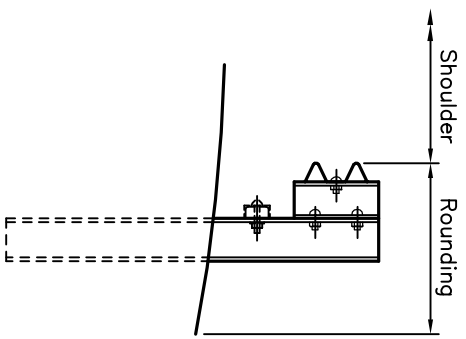
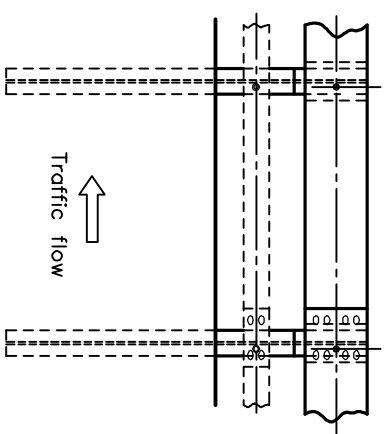
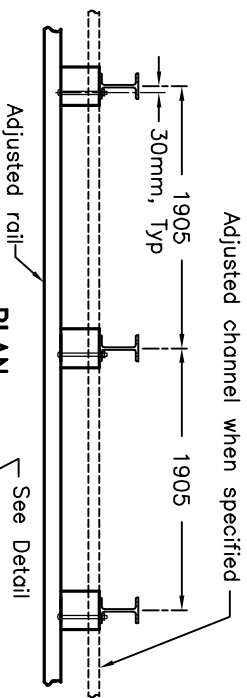


NEW POST BOLTS	
(A)	Post Bolt Size and Type 16x250 BH
(B)	Washer @ Nut 16x100 Cab Plate



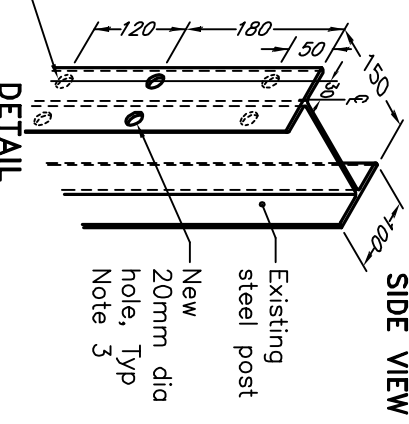
**EXISTING SINGLE RAIL WITH STEEL OFFSET BLOCK**

**ADJUSTED SINGLE RAIL WITH NEW WOODEN OR PLASTIC OFFSET BLOCK**

**NOTES:**

- 1 Washer shall not be installed at front face of rail. Type (A) bolt located at centre of steel beam guide rail.
- 2 Steel beam guide rail mounting heights shall be as specified.
- 3 One new hole shall be punched as required to attach new offset block.

Existing holes, Typ



A This OPSD shall be read in conjunction with OPSD 912.103 and 912.104.

B All dimensions are in millimetres unless otherwise shown.

<b>ONTARIO PROVINCIAL STANDARD DRAWING</b> <b>GUIDE RAIL SYSTEM, STEEL BEAM STEEL POST WITH STEEL OFFSET BLOCK ASSEMBLY</b> <b>ADJUSTMENT – SINGLE RAIL</b>	Nov 2016 Rev 1	
<b>OPSD 912.135</b>		